



Swindon SEND Families Voice

Winter Newsletter

Dear All

After a busy 2018 we are really looking forward to 2019 and all the work that comes with it! We can hardly believe our 1st birthday is imminent and thank you for all the support we have received through the last 12 months. We continue to grow and our team now consists of 5 committee members, 1 administrator and 10 parent representatives/volunteers! We have lots of events planned for this year that we hope many of you will find useful. Please continue to spread the word about us, we have so much work to do and the more families we can reach the more representative our feedback will be.

The Families Voice Team

Email: swindonsendfamiliesvoice@outlook.com

Ofsted Report

Ofsted carried out an inspection of Swindon Borough Councils SEND services in November. The report has been released and can be read via our website. As you will see there is lots of work to be done to improve things for our children. For our full statement please see our Facebook page or website.

www.swindonsendfamiliesvoice.org.uk

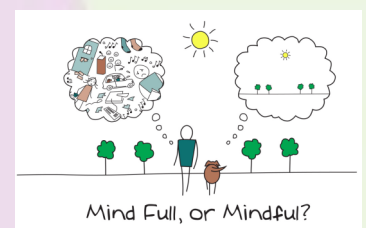


Events Coming Soon...

**ELSA Information
Event at Saltway**
**Fri 8th Feb see page
3 for more info**
9.45-11.30

Mindfulness - Fri 22nd Feb
Carers to stay, siblings welcome
4-10 years 10.30-11.15
10-16 years 11.30-12.15
The Meadows, Penhill, SN2 5DE
No need to book - Just turn up!

**Education Health
and Care Plan Workshop**
April 4th 10-12 & 29th 7-9pm
Venue tbc
Email to book a place



Mind Full, or Mindful?

More events and news...

our **VOICES** are **BETTER** **TOGETHER**



Swindon SEND Families Voice

Winter Newsletter

Are you a member of
The SEND Room?

The SEND Room (with SEND standing for Support Encourage Nurture Discuss) is our online support group for all parents and carers of children and young people with **ANY** SEND aged 0-25 in Swindon. The group is 'closed' which means only the people within the group can see what is posted, and you have to answer 2 questions to be approved to join the group to help ensure that only parents and carers in Swindon can join. It has been going since November and already has 300 members! So please search for 'The SEND Room' on Facebook and click to join!



Find us on
Facebook

David Haley, the Director of Children's Services at Swindon Borough Council, would like to meet you!

1. An Education Health and Care Plan Focus Group

Share your experience of EHCPs and discuss what challenges you have faced and what improvements can be made.

When: Wednesday 6th February 12-1pm

Where: STEP, Nythe Centre, The Drive, Nythe, Swindon, SN3 3RD

Email: swindonsendfamiliesvoice@outlook.com to book a place!

2. Feedback Session for Parents and Carers

General feedback session to discuss any subject related to SEND in Swindon for 0-25 year olds including EHCPs, education, home education and exclusions.

When: Tuesday 26th February 6-7pm

Where: Civic Offices, Euclid Street, SN1 2JH

No need to book, just turn up!

our

VOICES

are

BETTER

TOGETHER



Swindon SEND Families Voice

Winter Newsletter



Happy 1st Birthday to us!

In the spirit of Families Voice, we would like to put on an event to both celebrate our birthday and also provide something useful to you all. We would like to invite you to a 'Focus on Health and Wellbeing' drop in event where you can bring your children to play, if you have them with you, and put your questions to health professionals (and eat cake!!) **EVERY parent and carer of a SEND child/young person aged 0-25** is invited to this drop in session. Booking is not necessary, but eating cake is essential!!

Where: Hop, Skip and Jump, Shaw, SN5 5PU

When: Monday 4th March 10.00-12.00

More details coming soon...



What is an ELSA?

Swindon Borough Council and the CCG (Health Services) are funding 2 Teaching Assistants from every primary and secondary school in Swindon Borough to be trained as ELSAs. But what is an ELSA? It stands for Emotional Literacy Support Assistant. They are teaching assistants who have received specific additional training from educational psychologists from whom they receive on going supervision following training. Their role is to support children and young people in school to understand and regulate their own emotions whilst also respecting the feelings of those around them. We are working in partnership with Coast to bring you an ELSA information event. Anyone who is a parent or carer of a child with SEND that is up to 16 years old is invited to attend the session at the Saltway centre 9.45-11.30 on Friday 8th February. No need to book a place. Please come along and have a cup of tea/coffee and find out what having ELSAs in schools mean for our children with SEND.



**You are invited to the SEND
Local Offer Big Day
March SENDsation**

**12th March 2019
12:30 to 17:30
at STEAM Museum**

Fire Fly Avenue, Swindon, SN1 2EY

Information, advice and services that support families of children and young people age 0 - 25 with special education needs and disabilities (SEND) brought together in one place

our
VOICES

are
BETTER

TOGETHER